

2016 Annual Report



TABLE OF CONTENTS

Contents

Director’s Message	1
Who We Are	2
What We Do.....	3
SPOR Consultation and Research Services Platform	4
Some Highlighted Projects.....	7
Our Team.....	14
Students.....	27
A New Home.....	30
Awards	31
Other Activities	32
Financial Highlights.....	33
Appendix A: Cumulative List of All EPICORE Projects.....	34
Appendix B: Partial List of Investigators Served.....	51
Appendix C: Current Projects.....	55
Appendix D: EPICORE Centre Publications.....	59
Appendix E: Summary Income Statement	61

DIRECTOR'S MESSAGE



Thank you for reading our 2016 annual report (or, at least this part...). It has been a good year – finally, a permanent home – funny how things have come full circle, after 13 years, we are back in the Heritage Medical Research Centre, where we started 30 years ago.

We continue forward with our mission – to *serve our community*, and *facilitate clinical and outcomes research*. We continue to expand our investigators and projects, now with 92 current projects and over 298 individual researchers served. We feel that

this is simply the right thing to do – for our University and for patient care.

The Alberta SPOR Support Unit (ABSPORU) Consultation and Support Platform (for whom we are the secretariat) has continued to provide synergy to help us achieve our mission. By supporting some of our infrastructure, and providing some resources towards patient-oriented research services, we are able to expand our support of researchers. And this includes a number of new researchers – clinicians and residents. SPOR has helped to expand our reach to include University of Calgary, Alberta Health Services, Primary Care Networks and University of Lethbridge researchers.

As I reflect upon our progress, I realize that all along, it's been about our people and our philosophy. We do our own research, yes, but importantly, we actively contribute to our institution's academic mission by helping researchers to design and conduct their research to the highest standards. This is why you'll see our annual report featuring our people and the projects that they have helped with.

Special congratulations to Meagan Dunn, RN, BScN, MSc (Medicine), who completed her MSc thesis and was awarded her degree. Also to Glennora Dowding, who retired and then came back part time to continue to organize us. As before, I am indebted to our advisors, Mr. Paul Braconnier and Dr. Terry Montague whose wisdom and sage advice have been invaluable. And, a special thanks to our administrative team at the Department of Medicine, starting with the strong support from our Department Chair, Dr. Barbara Ballermann and Tim Bulger, Amy Gong, Margo Desmarais and Len Wong.

With all of this help, our project revenue has stabilized. And, we have substantial contracted work for the coming year. Our staff continues to shine – providing essential services to more and more researchers. Yes, this is what EPICORE's all about. Please read on (and, thanks for your support).

Dr. Ross Tsuyuki
Professor of Medicine and Director, EPICORE Centre
Department of Medicine
Faculty of Medicine and Dentistry
University of Alberta

WHO WE ARE

Who We Are

EPICORE Centre is an operating unit within the Department of Medicine, which itself is a part of the Faculty of Medicine and Dentistry at the University of Alberta.

Faculty of Medicine and Dentistry

Mission: The Faculty of Medicine & Dentistry serves the public good through excellence in medical and health professions education, research and patient care. We build partnerships essential to a high-performing academic health sciences centre.

Department of Medicine

Mission: To improve the health and health care of current and future generations through excellence and innovation in education, research and clinical care.

EPICORE Centre

Mission: To serve the Faculty and our community by generating new knowledge in the areas of health and health care through the design, execution and analysis of clinical trials, health outcomes research and epidemiologic studies.

EPICORE Centre supports the mission of the Faculty of Medicine and Dentistry and the Department of Medicine through:

- Conducting innovative research that makes a difference in health and health care
- Furthers this excellence through service to other health researchers
- Education of the next generation of health researchers through graduate student programs and courses
- Partnerships with like-minded individuals and organizations

A unique aspect of EPICORE Centre is that we are an *open* group – we make our skills and services available to *all*, not just members of our research group.



WHAT WE DO

What We Do

Our Goal is to support clinical and health services research by providing research services to investigators.

EPICORE Centre is involved in the full range of activities necessary for the conduct of clinical trials and outcomes/health services research, including protocol/research design consultations, case report forms design, database creation, study management, implementation, site coordination (for multicentre trials), data management, biostatistical consultation and analyses and assistance with grant preparation.

EPICORE has participated in 602 projects (Appendix A) for over 290 different investigators (Appendix B). In 2016 and early 2017, we:

- worked on 92 projects, ranging from consultations to multicentre trials (Appendix C)
- were recognized on 31 publications (Appendix D)
- received 3 awards

Some More Numbers:

1990	EPICORE founded
1998	EPICORE begins to service clinical and outcomes researchers
602	Projects done by EPICORE (Appendix A)
298+	Different investigators served by EPICORE (Appendix B)
92	Current projects (Appendix C)
9	Risk Assessments performed for the University of Alberta in 2016
15	Faculty of Medicine and Dentistry departments served
9	Other departments, schools, faculties and universities served
72	Trainee awards (2 in 2016)
37	Trainees (graduate, postgraduate training, & postdoctoral fellows, 7 currently)
27	Affiliated Faculty members
31	Publications acknowledging EPICORE in 2016 (Appendix D)
II, III & IV	CHIR pillars served. EPICORE is the only group providing services to investigators in the area of clinical trials, health outcomes and epidemiology

SPOR CONSULTATION AND RESEARCH SERVICES PLATFORM

Alberta Strategy for Patient Oriented Research Support for People and Patient-Oriented Research and Trials Unit



Alberta Strategy for Patient Oriented Research Support for People and Patient-Oriented Research and Trials Unit (ABSPORU) is a five year \$48 million federal-provincial partnership between Alberta Innovates (AI) and the Canadian Institute for Health Research (CIHR). We were the first established unit among a network of SPOR SUPPORT Units across Canada.

Our vision is to advance knowledge to improve patient health and healthcare with the goal to increase the quantity and quality of patient-oriented health research.

ABSPORU partners with Alberta Health, Alberta Innovates, Alberta Health Services, Athabasca University, University of Alberta, University of Calgary and University of Lethbridge.

ABSPORU is composed of seven platforms: Career Development, Consultation and Research Services, Data, Knowledge Translation, Methods, Patient Engagement and Pragmatic Clinical Trials. (Please visit absporu.ca

for further information on each platform).

ABSPORU's approach is to offer training opportunities and services (rather than research operating grants) to support patient-oriented research from initial concept through to writing the manuscript.

Research would be eligible for ABSPORU's support if it:

1. Is conducted in Alberta/Northwest Territories or has an Alberta based investigator
2. Is patient-oriented
3. Demonstrates evidence of end-user engagement
4. Has a potential for end-user (patient)/system impact

SPOR CONSULTATION AND RESEARCH SERVICES PLATFORM

ABSPORU considers research patient-oriented if it includes at least one of the following

- I. Focuses on patient-identified priorities
- II. Meaningfully engages patients as partners
- III. Has the potential to improve patient outcomes

Please visit www.absporu.ca to find out how can you take advantage of all the services that ABSPORU offers.

Dr. Ross Tsuyuki is the Consultation and Research Services (CRS) Platform lead. Dr. Yazid Al Hamarneh is the Associate Director/Scientific Officer. The platform was launched in November 2015.

*EPICORE Centre acts as the secretariat of the CRS Platform.
In return, the platform pays for the services it uses.*

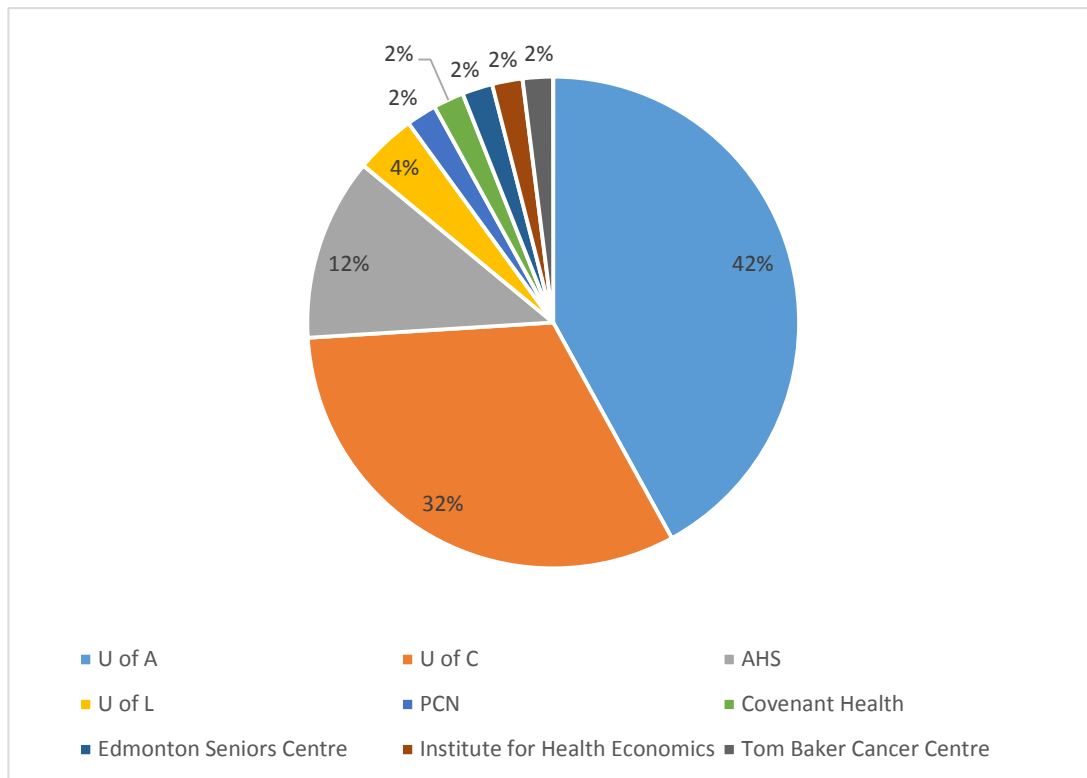
The CRS Platform provides services for projects involving primary data collection (original data which is being collected for the first time to answer research question/s) using qualitative or quantitative methods. Such services can be categorized into:

- A. Design/Methods services
 - a. Research question refinement
 - b. Project design
 - c. Method consultations
 - d. Grant review
- B. Data Management Services
 - a. Development of case report forms
 - b. Database development and maintenance
 - c. Randomization
 - d. Quality Assurance
- C. Biostatistics
 - a. Development of analytical plans
 - b. Sample size calculation
 - c. Statistical analysis
 - d. Clinical event adjudication

SPOR CONSULTATION AND RESEARCH SERVICES PLATFORM

Activities this year:

Researchers from a variety of disciplines, institutions and stages of careers (ranging from students to professors) have benefited from the CRS platform services. The Figure below illustrates the application sources by institution to show the breadth of our service provision.



CRS Platform application sources by institution (U of A = University of Alberta, U of L = University of Lethbridge, U of C = University of Calgary, PCN = Primary Care Networks, AHS = Alberta Health Services)

For more information on the SPOR Consultation and Research Services Platform, please see <https://www.epicore.ualberta.ca/SPOR>

SOME HIGHLIGHTED PROJECTS

Some Highlighted Projects



“I was introduced to Ross Tsuyuki and the EPICORE Centre through the University Hospital Foundation, to help with development of a clinical trial to examine the impact and effectiveness of introducing a nurse practitioner for treatment of people with multiple sclerosis. The experience of working with EPICORE to develop a MS clinical trial, come up with relevant outcome measures, considering practicalities of clinical trial logistics has been invaluable to a clinician such as myself. EPICORE has provided the support and structure to design, then carry out a clinical trial. We will be starting trial recruitment in the upcoming few months, and I am confident that we will meet our goals and provide valuable outcomes that are useful in the health care delivery to MS patients.”

Dr. Penny Smyth, Associate Professor, Department of Neurology

Study Title: Nurse Practitioner Management of Multiple Sclerosis in the Community

Lead Investigator: Dr. Penny Smyth, Associate Professor, Department of Neurology

EPICORE Centre’s Role: We helped to design the study and obtain funding through the University Hospital Foundation. We are also able to connect the Alberta SPOR Support Unit and Consultation and Research Services Platform to provide some in-kind resources for the conduct of the study (see page 4). We will be involved in the conduct of the study, providing data management and biostatistical services.

SOME HIGHLIGHTED PROJECTS



“EPICORE was responsible for designing the final CRFs, development of the database, interacting with the sites for data submission and entering the data into the database. To date, the recruitment closed as of September 2016 and the CRF data is entered. The laboratory data will be transferred over in the near future.”

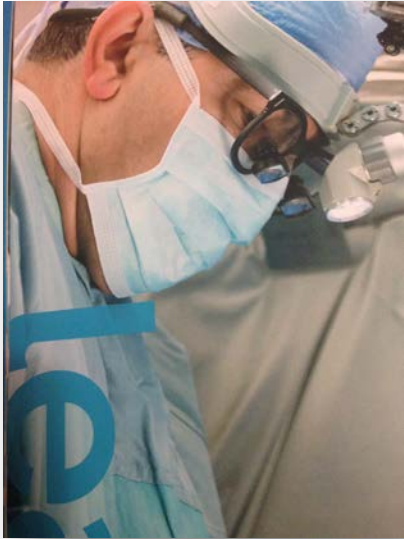
Professor Lesley Mitchell, Professor – Hem/Onc,
Department of Pediatrics

Study Title: Applied Biomarkers in Late Effects of Childhood Cancer Study Group: Relationship of Prothrombotic Markers to Thrombosis in Survivors of Childhood Cancer

Lead Investigator: Professor Lesley Mitchell, Professor – Hem/Onc, Department of Pediatrics

EPICORE Centre’s Role: EPICORE Centre we involved in the grant submission to CIHR, and has provided the data management services and biostatistical services for the ABLE project (with its 4 substudies) – it is currently the largest pediatric biomarker study ever attempted.

SOME HIGHLIGHTED PROJECTS



“My comments in regards to the services we have received from EPICORE for our SWI trial is nothing short of excellent, we find the web based interactive program that has been designed for us very convenient and easy to work with, allows multiple coordinators and/or centers be involved in the study. Similarly our interaction with the staff at the EPICORE has been very positive, they have been monitoring our study and if there has been a concern they have been very proactive in informing us and trying to solve the problem. I have no reservation to recommend EPICORE for an active member of research teams. Thank you for your support.”

Dr. Abbas Khani-Hanjani
Associate Clinical Professor, Department of Surgery,
Division of Cardiovascular Surgery

Study Title: Topical Use of Vancomycin in Reducing Sternal Wound Infection in Cardiac Surgery

Lead Investigator: Dr. Abbas Khani-Hanjani, Associate Clinical Professor, Department of Surgery, Division of Cardiovascular Surgery

EPICORE Centre’s Role: We helped in the design of the study, including study methods, sample size, analytical plan, randomization and blinding procedures. We will also be conducting the interim and final analyses.

SOME HIGHLIGHTED PROJECTS



"I wanted to have a 'picture' of the pain profile of our study participants. The EPICORE staff rose to the challenge and were able to find the right resources. Thank you!"

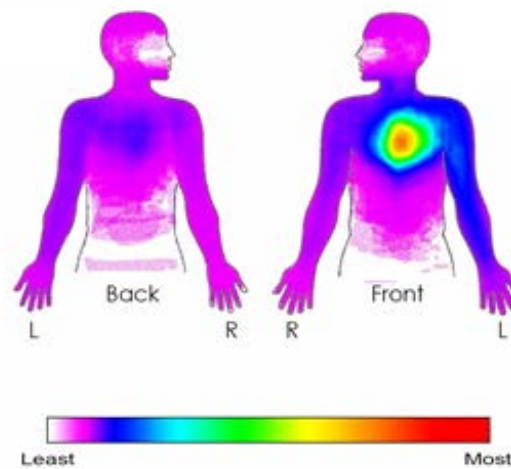
Dr. Kathy King-Shier, Professor and Guru Nanak Dev Ji DI Research Chair Faculty of Nursing and Department of Community Health Sciences, University of Calgary

Study Title: Presentation of acute coronary syndromes in White, South Asian, and Chinese patients: An international cohort study

Lead Investigator: Dr. Kathryn King-Shier, Faculty of Nursing and Department of Community Health Sciences, University of Calgary.

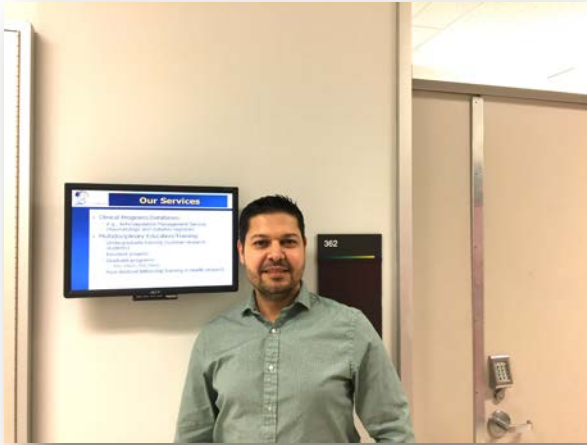
There has been much speculation on the presenting symptoms for acute coronary syndromes for different ethnic groups. This was a large international study of 2456 patients hospitalized with acute coronary syndromes in Canada, India, and China which assessed symptoms experienced by patients through the use of a visual torso silhouette and questionnaires. The "heat map" produced (example below) shows the frequency and location of patient's symptoms:

Whites in Canada



EPICORE Centre's Role: We were responsible for data management for the study, including design of the data collection forms, data entry, and data quality assurance measures.

SOME HIGHLIGHTED PROJECTS



EPICORE Centre also provides assistance to residents for their research:

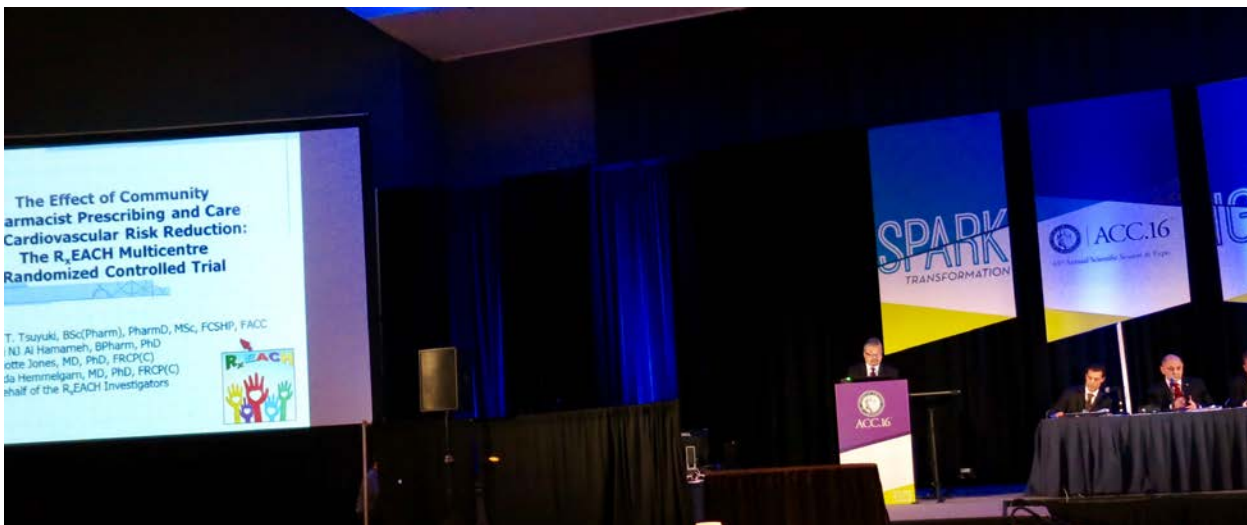
Dr. Shwan Mohydeen, Internal Medicine Resident

Study Title: Immunoglobulin replacement therapy in patients with COPD and Hypogammaglobinemia; a retrospective study

Lead Investigator: Dr. Harissios Vliagoftis, Director & Professor, Pulmonary Medicine

EPICORE Centre's Role: We assisted with biostatistical analyses and helped in the preparation of an abstract and publication.

SOME HIGHLIGHTED PROJECTS



Citation: Tsuyuki RT, Al Hamarneh YN, Jones CA, Hemmelgarn BR. The Effectiveness of Pharmacist Interventions on Cardiovascular Risk. The Multicenter Randomized Controlled R_xEACH Trial. *J Am Coll Cardiol* 2016; 67(24): 2846-2854.

Highlighted Researchers: Dr. Ross Tsuyuki. Professor of Medicine (Cardiology), and Dr. Yazid Al Hamarneh, Research Associate, EPICORE Centre, Department of Medicine, Faculty of Medicine and Dentistry, University of Alberta. Dr. Charlotte Jones, Southern Medical Program, University of British Columbia, Kelowna, BC. Dr. Brenda Hemmelgarn, Department of Public Health Sciences, University of Calgary.

Premise: Despite the risk for cardiovascular disease associated with hypertension, smoking, dyslipidemia, and diabetes, these risk factors remain poorly identified and controlled. Alberta offers an expanded scope of practice for pharmacists – we sought to evaluate the effectiveness of a community pharmacy based case finding and intervention (including prescribing, laboratory testing, and follow-up) in patients at high risk for cardiovascular events (those with diabetes, chronic kidney disease, vascular disease, or high risk primary prevention).

Methods: This was a randomized controlled trial of pharmacist prescribing and care conducted in 56 communities in Alberta. High risk patients were identified by their pharmacist and randomized to receive an intervention (advanced care by their pharmacist including cardiovascular risk assessment, patient education, prescribing, laboratory testing and follow-up monthly for 3 months) or usual pharmacist/physician care with no scheduled follow-up.

Main Findings: A total of 723 patients were enrolled. Cardiovascular risk was reduced by 21% in the pharmacist care group compared to usual care. All risk factors were significantly improved in the pharmacist care group, and patient satisfaction was high.

Impact: This is the first randomized trial of pharmacist prescribing and care in the reduction of cardiovascular risk. This represents a novel patient-centred, community-based approach to chronic

SOME HIGHLIGHTED PROJECTS

disease management, which could have major public health importance, as cardiovascular disease remains a leading killer of Canadians.

R_xEACH was selected as a “late breaking clinical trial” at the American College of Cardiology meeting in Chicago in April, 2016. The results of R_xEACH have also been presented in Berlin, Seoul, Pomona (USA), Calgary, Montreal, Vancouver, Tokyo, Fukuoka, Kyoto, Ueda, Buenos Aires, with upcoming presentations in Stockholm, Malaga (Spain), other locations in Japan, and Wellington (New Zealand).

The R_xEACH oral abstract presentation was awarded the best oral paper at the Canadian Pharmacists Association annual meeting in June, 2016.

Funding: Alberta Health, Workforce Planning; Cardiovascular and Stroke Strategic Clinical Network, Alberta Health Services; Merck Canada (for the educational materials we developed).

EPICORE’s Role: The project was led by Drs. Tsuyuki and Al Hamarneh from EPICORE Centre, along with Dr. Brenda Hemmelgarn (University of Calgary) and Dr. Charlotte Jones (University of British Columbia). EPICORE was responsible for the case report forms, data management (including database), data quality assurance and statistical analyses, as well as the overall management of the study.

Professional Conference and Annual Meetings • Ottawa, Ontario • October 26 – 29, 2016



OUR TEAM



Dr. Ross Tsuyuki

Hometown: Coquitlam, BC

Background:

- BSc(Pharm), University of British Columbia
- Residency, St. Paul's Hospital/University of British Columbia
- PharmD, State University of New York at Buffalo
- Fellowship, Division of Cardiology, McMaster University (Supervisor, Dr. S. Yusuf)
- MSc (Health Research Methods), McMaster University

Position:

- Professor of Medicine, Faculty of Medicine and Dentistry, University of Alberta
- Director, EPICORE Centre
- Platform Lead, Consultation and Research Services, Alberta SPOR (Strategy for Patient-Oriented Research) Support Unit
- Editor-in-Chief, Canadian Pharmacists Journal

Skills:

- Health research methods
- Communicator
- Collaborator
- Clinical skills in heart failure care (Heart Function Clinic x 20 years)

What I do:

- Health services research, including pharmacy practice research (focus on evidence generation to advance patient care and pharmacy practice)
- Provision of support to researchers through EPICORE Centre and SPOR CRS Platform
- Training the next generation of health researchers

Why I do it: "I am so lucky to have a strong team of like-minded individuals at EPICORE Centre – it is my goal to make a difference in the delivery of health care and that includes helping others to conduct their research."



OUR TEAM



Dr. Tammy Bungard

Position: AMS Program Director
Associate Professor of Medicine
Division of Cardiology
Department of Medicine

Hometown: Chestermere, AB

Background (degrees and work experience):

- Bachelor of Science in Pharmacy (BSP) with Great Distinction (University of Saskatchewan)
- General Practice Hospital Pharmacy Residency, Red Deer Regional Hospital Centre
- Doctor of Pharmacy (PharmD), Wayne State University, Detroit Michigan
- Postdoctoral Research Fellowship funded by the Alberta Heritage Foundation for Medical Research, University of Alberta
- Implementation of the Anticoagulation Management Service – current role

Skills/expertise:

- Anticoagulation therapies – selection and care delivery/management
- Pharmacist prescribing – from creation of the Albertan model to implementation in daily practice

Why I do what I do:

“To improve patient outcomes and experiences with the healthcare system. To promote the proactive role of the pharmacist in the delivery of healthcare, and elevate the profession of pharmacy. To serve as a good role model as a mom, and make my kids proud!”



OUR TEAM



Dr. Yazid N Al Hamarneh

Position: Scientific officer, Alberta SPOR Support Unit Consultation and Research Services Platform

Hometown: Madaba, Jordan

Background (degrees and work experience):

- BSc in Pharmacy in 2005 from the University of Jordan
- Professional Medical Representative at Merck Sharp and Dohme IA 2005-2006
- PhD in Clinical Pharmacy and Pharmacy Practice in 2010 from Queen's University Belfast
- Postdoctoral Fellowship in Medicine (Cardiology) from the University of Alberta in 2015



Skills/expertise:

- Research methodology and design (quantitative and basic qualitative)
- Grant writing and evaluation
- Basic statistics (analytical plan, sample size calculation and basic statistical analysis)
- Basic REDCap and FunctionPoint
- Conducting pharmacy practice research
- Cardiovascular risk calculation and identification and management of cardiovascular disease risk factors



Why I do what I do:

"I really enjoy helping people and contributing to achieving their research targets. I truly believe that pharmacists can play a major role in helping patients with/at risk of cardiovascular disease understand and manage their risk for a cardiovascular event (such as stroke, myocardial infarction) so that they can live the life they deserve."

OUR TEAM



Lily Yushko

Position: Team Lead, Clinical Research Informatics

Hometown: Kiev, Ukraine

Background (degrees and work experience):

- MEd, National Pedagogical University, Kiev, Ukraine
- Computer Systems Technology, NAIT, Edmonton, AB

Skills/expertise:

- Years of experience in finding out exactly what needs to be done and doing it
- Case report forms and database design
- Data management
- Clinical and research application development
- Patient registries and surveys

Why I do what I do:

“There is never a dull day at work.

Every day is a new adventure: new projects, new people, new problems, new solutions, new discoveries, and new friends.”

OUR TEAM



Imran Hassan

Position: Biostatistician

Hometown: Dhaka, Bangladesh

Background (degrees and work experience):

- BSc (Statistics & Biostatistics), University of Dhaka, Bangladesh
- MSc (Biostatistics), University of Alberta, AB, Canada
- 2014-present: Biostatistician, EPICORE Centre
- 01-08/2014: Statistical Consultant, Training Consulting Centre, Dept. of Mathematical and Statistical Sciences, U of A
- 2013-2014: Research Assistant, Dept. of Mathematical and Statistical Sciences, U of A
- 2011-2012: Research Assistant, Rural Development Partnership Society (RDPS), Dhaka, Bangladesh

Skills/expertise:

- Statistics,
- Biostatistics
- Epidemiology
- Research methods

Why I do what I do:

“My career mission is to bridge the wide gap between theoretical and applied statistics and to benefit health research through the proper use of the state-of-the-art statistical tools. I have a balanced approach to life with a little bias toward my family. I love spending time playing with my little child, Umar. I like travelling to see nature. I enjoy working with my very nice colleagues at EPICORE Centre where I can fulfil my career mission with a fine balance with my life.”



OUR TEAM



Debbie Boyko

Position: Research Project Coordinator

Hometown: Edmonton, AB

Background (degrees and work experience): I am a Registered Nurse whose 40-year career has taken me on a journey to most arenas within the Nursing field. My specialty areas from the past included Day Surgery and Emergency Nursing. The Emergency Department setting is where I was introduced to Research. The love of being involved with major studies that will someday make a difference, is what brought me to where I am today at EPICORE.

By overseeing the Data Management of an International Pediatric Oncology Study, I feel both my enthusiasm to teach and my medical background have helped provide strong leadership to the Research Teams involved. Good Clinical Practice is the ongoing theme I try to instill for all to strive for.

Skills/expertise: With the combination of passion and patience, I have been able to develop a strong working relationship with these Teams, who in turn have continued to provide us with the premium quality data required.

Why I do what I do: “My mission is to provide ongoing training and guidance to the Study Personnel responsible for the delivery of clean, concise data in preparation for the next step of research, the Analyses. I am very proud to be part of the EPICORE Team of Professionals!”

I thoroughly enjoy travelling with my husband, golfing and time spent with our young grandson with another on the way!



OUR TEAM



Glennora Dowding

Position: Administrative Assistant

Hometown: Lumsden, NL

- Background (degrees and work experience): Management Development Program Certificate, UofA Extension 1996
- I've worked at EPICORE Centre since 1996

Skills/expertise:

- Organization
- Administration
- Communication
- Handling multiple priorities
- Meeting and event coordination
- Records management
- Office procedures
- Supplies management
- Maintaining office equipment
- Transcribing dictation
- MS Office – Word, Excel, Visio and PowerPoint



Why I do what I do:

"After retiring in June, I was very happy to return to my position in August, working half time. It's wonderful to still be part of a fantastic team of health care researchers and students, while having more time for running, golfing, hiking, motorcycle riding, and spending time with my grandson."

OUR TEAM



Andriani Yunita

Position: Database Programmer Intern

Hometown: Bogor, Indonesia

Background (degrees and work experience):

- Diploma in Computer Programming - Humber College (2011 - 2013)
- Bachelor in Computing Science Specialization in Software Practice - UofA (2013 - 2018)

Skills/expertise:

- Database and web application development
- Badminton and swimming
- Cooking on a student budget

Why I do what I do:

“Because it is fun and challenging.”



OUR TEAM



Miriam Fradette

Position: Research Coordinator

Hometown: Edmonton, AB

Background (degrees and work experience):

- BSc Pharm
- Accredited Pharmacy Residency Program.
- Clinical Pharmacist (Cardiology)
- Pharmacy Management
- Research Coordinator

Skills/expertise:

Clinical Trial Management (study operations, data management, recruitment, patient management, preparation of study manuscripts, etc.)

Why I do what I do:

“Research provides the opportunity to examine new methods to improve delivery of healthcare, work with patients and highly motivated coworkers.”



OUR TEAM



Hiroshi Okada

Position: Post-doctoral fellow

Hometown: Fukuoka, Japan

Background (degrees and work experience):

- BEd, MSc (Biology)
- Pharmacist
- Research Fellow (Kyoto medical center research center 2008-2016)
- Kyoto university school of public health 2016-), Lecturer (Ritsumeikan University, Kyoto Medical Center 2015-2016)

Skills/expertise:

- CDE (Certified Diabetes Educator 2009-)
- CSII (Continuous Subcutaneous Insulin Infusion) Trainer
- Facilitator of MI (Motivational Interviewing 2012-) program for community pharmacists

Why I do what I do:

“I think that pharmacists do not only have knowledge about medication but also can give wider range of support for patients in their community. I would like to show it through my research.”



OUR TEAM



Marcie Jayne Smigorowsky

Position: PhD student, Faculty of Medicine and Dentistry, University of Alberta

- Nurse Practitioner
- Advanced Practice Nursing, Professional Practice Leader

Hometown: Edmonton, AB

Background (degrees and work experience):

- BScN , MN, PhD(c), CCCN(c)
- Cardiac Nursing for over 30 years
- Coronary Intensive Care Nurse Educator
- Cardiac Rehabilitation Nurse
- Pacemaker Nurse
- Cardiac Nurse Practitioner - 13 years

Skills/expertise:

- General Cardiology
- Atrial Fibrillation
- Advanced Practice Nursing
- Patient Focused Healthcare
- Healthcare Optimization
- Healthcare Research - student

Why I do what I do:

“Personal experience with the healthcare system has led me to feel passionate about improving the patient journey together with healthcare optimization.”

OUR TEAM



Dr. Nathan Beahm

Position: Postdoctoral Fellow

Hometown: Estevan, SK

Background (degrees and work experience):

- BSP (University of Saskatchewan - 2011)
- PharmD (University of Alberta - 2016)

Worked for 1 year as a relief pharmacist for Shoppers Drug Mart for Saskatoon and area after completion of BSP, then worked as a clinical pharmacist at the hospital in Yorkton, SK up until leaving for – and for a few months after completion of – PharmD training.

Skills/expertise:

- Main clinical area of interest is infectious diseases/antimicrobial stewardship
- Other areas of interest include anticoagulation, diabetes, and heart failure.
- Also ok at volleyball

Why I do what I do:

“I am motivated to provide excellent patient care, as well as to enhance the ability of others to provide exceptional patient care.”



OUR TEAM

Paul Braconnier

Position: Business Consultant

Hometown: Born and raised in Regina, Saskatchewan, spent most all of my career in Edmonton, AB

Background (degrees and work experience):

- Bachelor of Administration (Business), University of Regina
- Chartered Accountant for 30 Years
- Led a full service clinical contract research company that managed and conducted human clinical trials, with operations in Canada, Mexico & Argentina
- Life Sciences-focused TEC Edmonton Executive-In-Residence

Skills/expertise:

- Strong interpersonal and communications skills
- Cross functional team membership and leadership
- Sound business judgment and common sense approach to problem solving
- Customer oriented approach for both internal and external customers
- Team player and team builder, consensus builder
- Extensive financial, legal, administrative and information system management
- Interaction with the investment community including investor and analyst presentations and discussions
- Extensive negotiations of business mergers, divestitures, acquisitions and software licensing agreements

Why I do what I do: "I enjoy providing business and management advice based on my experience and expertise. Being able to advise and mentor without need for compensation leaves me free to advise in an unbiased and unencumbered manner."

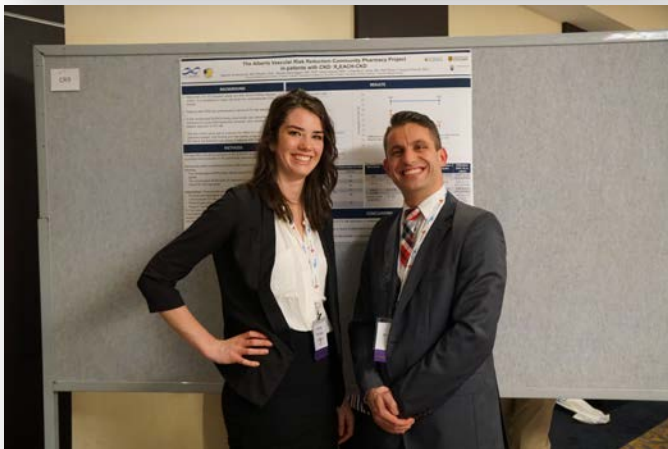


STUDENTS



Sarah Lamb

PharmD Student, University of Alberta
Rotation: Leadership in Practice
Change



Delaney Montague

BA student, St. Francis Xavier
University
Summer Research Student



Changlin (Charlie) Gong

Medical Student, Tsinghua
University, Beijing, China
International Federation of Medical
Students Associations, Summer
Research Program

STUDENTS



Andriani Yunita

Undergraduate Science Student,
University of Alberta

Science Internship Program, University
of Alberta



Nathan Beahm

PharmD Student, University of Alberta

PharmD Rotation: Academic Publishing



Meagan Dunn

MSc (Med) Student, University of
Alberta (received degree in June
2016)

Thesis Project: Therapeutic
Hypothermia after Cardiac Arrest
Registry

STUDENTS



Andrea Morgan

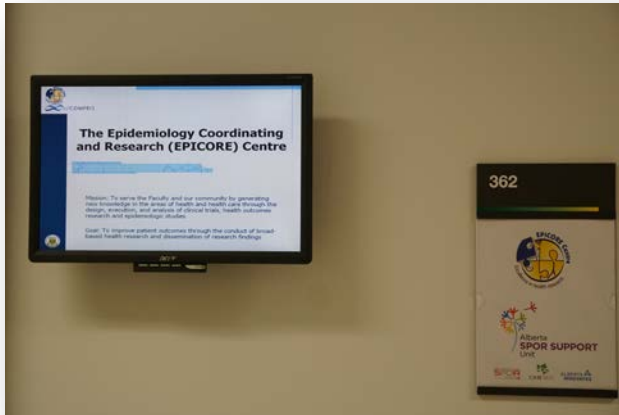
MPH Student, Liverpool

Thesis Project: Pharmacist-led CVD
Intervention for Inflammatory Arthritis
Patients (the RxIALTA Study)

A NEW HOME

A New Home

After a number of years in temporary space, EPICORE Centre finally got its new home at 362 Heritage Medical Research Centre. We moved on August 12, 2016.



AWARDS

Awards

- Dr. Ross Tsuyuki Department of Medicine Clinical Investigation Publication Award (Co-awardee with Dr. Finlay McAlister) for publication "Randomized Trial of the Effect of Pharmacist Prescribing on Improving Blood Pressure in the Community: The Alberta Clinical Trial in Optimizing Hypertension (R_xACTION)"
- Dr. Yazid Al Hamareh Best Pharmacy Practice Research Oral Presentation of abstract entitled "The Alberta Vascular Risk Reduction Community Pharmacy Project: R_xEACH" at the Canadian Pharmacists Conference, June, 2016
- Delaney Montague Canadian Hypertension Congress Student Travel Award (\$1,125). Hypertension Canada. October, 2016
- R_xEACH Team (Drs. Tsuyuki and Al Hamareh and co-investigators) Nomination for Alberta Health Services President's Excellence Award



Dr. Tsuyuki and Donna Galvin present the "Friend of Pharmacy Award" to R_xEACH collaborator, Dr. Charlotte Jones at the APEX Awards dinner.

OTHER ACTIVITIES

Dr. Tsuyuki and Dr. Norm Campbell travelled to Surabaya, Indonesia in January 2016 to present at a symposium on pharmacist-physician partnerships to improve hypertension management.



FINANCIAL HIGHLIGHTS

Financial Highlights

Project revenue for calendar year 2016 was marginally higher by \$19,000 at \$493,861, compared with \$474,802 in 2015, reflecting a stabilization of the revenues for EPICORE Centre.

Total expenses have decreased by \$102,000, from \$311,000 to \$209,000. The principal reason for this decrease is due to a recovery of bad debts of \$26,000 for the current year compared with a bad debt expense of \$68,000 last year. Other expenses were marginally lower, reflecting the continued secondment of employees to the SPOR platform.

Net income increased \$100,000, from \$164,000 in 2015 to \$285,000 in 2016. As noted above, the increase in revenue and decrease in expenses account for the increase.

The financial health of the organization continues to be very positive, with project revenue stabilizing. The SPOR project will continue throughout the next year and beyond, providing positive financial results for EPICORE Centre for the foreseeable future. The SPOR project is approved until 2020, and it is providing a great deal of exposure for EPICORE Centre leading to more projects in the future.

APPENDIX A

Appendix A: Cumulative List of All EPICORE Projects

	Name	PI	Status
1	Ace Inhibitor		Completed
2	ACES and Appendicitis		Completed
3	Advanced Cancer Staging		Completed
4	AFib cohort		Completed
5	Agitation & Tobacco Withdrawal		Completed
6	C.V. Awareness		Completed
7	Cardioversion Wait List Study		Completed
8	CHIH - Discharge Database		Completed
9	Creating Supports for Change and Transition		Completed
10	CRP		Completed
11	CSF – Meningitis, Encephalitis		Completed
12	Dept. of Medicine Database		Completed
13	DOPPLER Study		Completed
14	Dumper ENT		Completed
15	Early Fibrinogen transfusions in Trauma Patients		Completed
16	EXACT		Completed
17	Facial Trauma		Completed
18	Firefighter Lung Project - Medicine		Completed
19	Glaucoma and Robot Prostatectomy - Anesthesiology		Completed
20	Immunotherapy in Cat Allergy Subjects		Completed
21	Insulin Protocol		Completed
22	LipSplitScar Study		Completed
23	Mandibulotomy - Friend or Foe		Completed
24	MAp Study		Completed
25	MONO		Completed
26	NeuroSugery - Matnaj		Completed
27	Nursing Project - James		Completed
28	Pharmacist Hypertension Project		Completed
29	PICU - Fever Study		Completed
30	Pregnancy Risks		Completed
31	Rats IVS		Completed
32	Statin Utilization		Completed
33	Supporting Vulnerable Children - AI-HS		Completed
34	Surgery Practice		Completed

APPENDIX A

	Name	PI	Status
35	Surgery/Mrad		Completed
36	The Optics of Transdisciplinary Behaviours in...		Completed
37	Treatment & Control of hypertension in the Elderly		Completed
38	Validation of a Risk Model for Mode of Death		Completed
39	ABBOTT - ASPROSE Survey	ABBOTT	Completed
40	ABBOTT - ASPROSEUAH	ABBOTT	Completed
41	ABBOTT - ASPROSEUK	ABBOTT	Completed
42	ABBOTT - ASPROSEUSA	ABBOTT	Completed
43	ABBOTT - RAPROSE survey	ABBOTT	Completed
44	ABBOTT - RAPROSENL	ABBOTT	Completed
45	ABBOTT - RAPROSEUAH	ABBOTT	Completed
46	ABBOTT - RAPROSEUSA	ABBOTT	Completed
47	HESA Study - Abbott Labs	ABBOTT	Completed
48	HESA Study - Abbott Labs	ABBOTT	Completed
49	Parent Burden RSV - ABBOTT	ABBOTT	Completed
50	Comparison of Scan Methods	Abdul, A	Completed
51	Clopidogrel following Coronary Stenting	Ackman, M	Completed
52	Pharmacy Student Surveys	Ackman, M	Completed
53	Pharmacy/Cardiologist Focus Groups	Ackman, M	Completed
54	Epilepsy Clinical Database	Ahmed, N	Completed
55	VRR Worksite	AHS CV-SCN	Completed
56	Osteoporosis (2003)	Alagiakrishnan, K	Completed
57	Prevention of Delirium	Alagiakrishnan, K	Completed
58	T.V. Comparison	Allen, M	Completed
59	Reducing Restraints	Anderson, C/Leung S	Completed
60	Breast Implant	Anzarut, A	Completed
61	HCV Infection and Facial Trauma	Anzarut, A	Completed
62	Scarring after sternotomy	Anzarut, A	Completed
63	S.V.G.	Appoo, J	Completed
64	CAPTORS	Armstrong, P	Completed
65	WEST	Armstrong, P	Completed
66	HELP Study	Ashton, T	Completed
67	ICU Frailty Study	Bagshaw, S	Completed
68	Liver Transplantation	Bagshaw, S	Completed
69	HepC	Bailey, D	Completed
70	PhotoGraph	Beard, K	Completed
71	REGAIN	Beaupre, L	Completed

APPENDIX A

	Name	PI	Status
72	LV Strain	Becher, H	Completed
73	VAT Surgery	Bedard, E	Completed
74	Hyperglycemia & Oncology	Bergstrom, D	Completed
75	Metformin and Exercise	Boule, N	Completed
76	Bowering Diabetes Project	Bowering, K	Completed
77	CAMERA	Braam, B	Completed
78	Paralysis in Gastroschisis	Bratu, I	Completed
79	Gulf War Vets and CFS Databases	Broderick, G	Completed
80	Metformin and Exercise	Broule, N	Completed
81	Propensity Analysis	Brown, N	Completed
82	Low Back Pain Study	Bullard, M	Completed
83	AMS - Patient Opinion Survey	Bungard, T	Completed
84	AMS Anticoagulant Control	Bungard, T	Completed
85	AMS Benchmarking for Clot	Bungard, T	Completed
86	AMS Eval. of Main.Dosing vs Loading	Bungard, T	Completed
87	AMS HAS-BLED	Bungard, T	Completed
88	AMS On the way to practice change	Bungard, T	Completed
89	AMS Physician Survey	Bungard, T	Completed
90	AMS Point of Care	Bungard, T	Completed
91	AMS Satellite Clinics	Bungard, T	Completed
92	Assessment of Atrial Fibrillation management	Bungard, T	Completed
93	Bleed Risk	Bungard, T	Completed
94	Blood Pressure Assessment in the Anticoagulated Patient	Bungard, T	Completed
95	EASE Analysis	Bungard, T	Completed
96	LMWH in pregnancy	Bungard, T	Completed
97	Patient Self-Management of Warfarin	Bungard, T	Completed
98	Warfarin Knowledge Survey	Bungard, T	Completed
99	Diagnosis of Accuracy of Cardiac MRI	Butler, C	Completed
100	ROC Curve	Butler, C	Completed
101	Angioembolization/Spleen	Cadili, A	Completed
102	Endo Aneurysm Repair - Surgery	Cadili, A	Completed
103	Melanoma Study	Cadili, A	Completed
104	Nasogastric	Cadili, A	Completed
105	Pancreatic cyst	Cadili, A	Completed
106	SLNB	Cadili, A	Completed
107	Spleen Study	Cadili, A	Completed

APPENDIX A

	Name	PI	Status
108	Paravertebral Blocks/Breast Cancer	Cameron, J	Completed
109	Supraclavicular Brachial Plexus	Cameron, J	Completed
110	GP Practice	Campbell-Scherer, D	Completed
111	CHIRP Clinical Database	Casey, L	Completed
112	MESH	Chao, J	Completed
113	Scalpel and Cautery	Chao, J	Completed
114	MSS (Maternal Serum Screen)	Chari, R	Completed
115	Evidence trend	Chowdhury, R	Completed
116	Contrast Stress Echo	Choy, J	Completed
117	ECHO - AF	Choy, J	Completed
118	Echo Clinical Database	Choy, J	Completed
119	Echo Contract Study	Choy, J	Completed
120	Echo Stats	Choy, J	Completed
121	ENDOCARDITIS	Choy, J	Completed
122	T-Echo Study	Choy, J	Completed
123	TEE Emboli	Choy, J	Completed
124	Surg. Meno	Chubaty, A	Completed
125	Head and Neck Database	COMPRU	Completed
126	Suppression of Myocardial F-FDG uptake	Coulden, R	Completed
127	VRR Worksite	CV-SCN/Padwal, R	Completed
128	Heart Function Clinic Project	Dewart, K	Completed
129	Ulcerative Colitis and Prebiotics	Dieleman, L	Completed
130	Regional Anesthesia Database	Dillane, D	Completed
131	Dementia	Drummond, J	Completed
132	Families First Edmonton	Drummond, J	Completed
133	Control of PPH	Dryden, A	Completed
134	Globus Pharyngis	Dumper, J	Completed
135	Alberta Heart	Dyck, J	Completed
136	Moisturizers Study	Dytoc, M	Completed
137	Tobeornottobe	Dziegielewski, P	Completed
138	Total Glossectomy	Dziegielewski, P	Completed
139	Smile Sonica	El-Bialy, T	Completed
140	Degner Project	Estabrooks, C	Completed
141	PHANTOM	Eurich, D	Completed
142	Infliximab Adherence	Evaschesen, C	Completed
143	WalkAid	Everaert, D	Completed
144	AHF-em	Ezekowitz, J	Completed

APPENDIX A

	Name	PI	Status
145	ARCTIC-D	Ezekowitz, J	Completed
146	ASCEND Mapping	Ezekowitz, J	Completed
147	CAM-CV	Ezekowitz, J	Completed
148	Canadian Heart Failure Registry	Ezekowitz, J	Completed
149	Capital Health Chart Review	Ezekowitz, J	Completed
150	Heart Failure Clinic Data merging	Ezekowitz, J	Completed
151	HFC - Device Implant	Ezekowitz, J	Completed
152	HFC Abstract	Ezekowitz, J	Completed
153	HFC Core Data Collection	Ezekowitz, J	Completed
154	Resveratrol Study	Ezekowitz, J	Completed
155	Sodium H.F.	Ezekowitz, J	Completed
156	Vertebral Fractures in Heart Failure	Ezekowitz, J	Completed
157	VITA-H.F.	Ezekowitz, J	Completed
158	Dose Escalation	Fedorak, R	Completed
159	Pulmonary Crohns	Fedorak, R	Completed
160	Pulmonary involvement of Crohns Ps on IFX	Fedorak, R	Completed
161	VSL #3	Fedorak, R	Completed
162	Pearlium/Effectical	Fedorak, R /Sinoveda	Completed
163	TNF Alpha	Fedorak, R/Alistair	Completed
164	Newfoundland Metabolic Syndrome Study	Fodor, G	Completed
165	Pedicle Screw Insertion	Fox, R	Completed
166	Niemann-Pick Type C	Francis, G	Completed
167	Risk Reduction Live Database	Francis, G	Completed
168	Risk Reduction Study	Francis, G	Completed
169	Creating Bone & Joint Health	Frank, C	Completed
170	Creating Bone and Joint Health	Frank, C	Completed
171	Hip & Knee Fracture	Frank, C	Completed
172	CHAMP	Galvin, D/Jones, C	Completed
173	COPD Analyses	Garneau Lung Lab	Completed
174	How many are too many?	Garros, D	Completed
175	FLAP - Surgery	Ghamdi, M	Completed
176	Propofol increases vascular relaxation - Dept of Anesthesiology	Gragasin, F	Completed
177	APPROACH Audit and Feedback Project	Graham, M	Completed
178	esSTROKE	Green, T	Completed
179	Marijuana and Epilepsy	Gross, D	Completed
180	PRP Breast Study	Guenther, C/Anzarut, A	Completed

APPENDIX A

	Name	PI	Status
181	RIPC	Guerra, G	Completed
182	Diabetes Care Optimization	Gyenes, G	Completed
183	Big Five Inventory - hosp. pharm.	Hall, J	Completed
184	Costco Pharmacists Intervention	Hanna, J	Completed
185	Breast Cancer vs Heart Failure	Haykowsky, M	Completed
186	KITE	Haykowsky, M	Completed
187	Aliskiren	Hossini, F	Completed
188	B.P. Reduction Sample Size	Houle, S	Completed
189	Antimicrobial Catheter Study	Hunt, I	Completed
190	Catheter	Hunt, I	Completed
191	CAREERS	IHE	Completed
192	IHE Survey (Arto)	IHE	Completed
193	IHE Survey (Ollie)	IHE	Completed
194	VASTVALUS	Jacka, M	Completed
195	SPSS Syntax Development	Janzen, W	Completed
196	Stroke and First Nations	Jeerakathil, T	Completed
197	Cefazolin	Joffe, M	Completed
198	STRIP Type2	Johnson, J	Completed
199	HEALD- PCN	Johnson, S	Completed
200	IPAD Survey	Johnston, B	Completed
201	Co Morbidities	Jones, A	Completed
202	PREP Study	Jones, A	Completed
203	Memantine/ALS	Kalra, S and Chan, M	Completed
204	Acute Kidney Injury	Kanji, H	Completed
205	Colonoscopy	Kao, D	Completed
206	Fecal Transplant	Kao, D/Madsen, K.	Completed
207	Vaccination of RA patients	Keeling, S	Completed
208	FRESH	Kendle, D/Dian, L	Completed
209	A.C.S.Database	Khan, N	Completed
210	IDEAL	Kimber, S	Completed
211	SATTURN Study	Kimber, S	Completed
212	STICK	King, K	Completed
213	esACS	King-Shier, K	Completed
214	VTE and Thrombocytopenia	Kopolovic, I	Completed
215	STATIN	Koshman, S	Completed
216	Statin Utilization 2	Koshman, S	Completed
217	TIC TAC	Koshman, S	Completed

APPENDIX A

	Name	PI	Status
218	Beck Study	Kroeker, K	Completed
219	Childhood IBD	Kroeker, K	Completed
220	Fatigue in IBD	Kroeker, K	Completed
221	PIVOT Trial	Kumar, D	Completed
222	Dr. Kunimoto consultation	Kunimoto, D	Completed
223	PET Database	Lambert, R	Completed
224	Anorectal Manometry	Lazaurescu, A	Completed
225	Banding Study	Lazaurescu, A	Completed
226	Use of Pain Pumps after Abdominoplasty	Lee, J	Completed
227	Trends in Nosocomial Blood Stream Infections	Lee, M	Completed
228	Infliximab Infusion	Lee, T/Fedorak, R	Completed
229	Iron IV vs. Oral	Lee, T/Fedorak, R	Completed
230	Osteoporosis Study	Lin, A	Completed
231	PTSD	Logsetty, S	Completed
232	BNA Questionnaire	Long, R	Completed
233	T.B. Study	Long, R	Completed
234	TB Transmission - Medicine	Long, R	Completed
235	Dr. Gavin Low	Low, G	Completed
236	Genetic Mutation	Lu, C	Completed
237	Sample size calculation Oct. 01/08	Ma, M	Completed
238	SBE Prophylaxis	Mackie, A	Completed
239	AVOID	Majumdar, S	Completed
240	Contrast	Majumdar, S	Completed
241	Opinion Leader Study	Majumdar, S	Completed
242	Patient Safety in CHA	Majumdar, S	Completed
243	STOP #	Majumdar, S	Completed
244	WREST	Majumdar, S	Completed
245	Wrist Fracture	Majumdar, S	Completed
246	WRIST Fracture Substudy	Majumdar, S	Completed
247	Impact of Pharmacists	Makowsky, M	Completed
248	E-Triage	Maksymowych, W	Completed
249	OARSI-OMERACT	Maksymowych, W	Completed
250	Geriatric Assessment	Marin, A	Completed
251	Seniors' Clinic Chart Review	Marin, A/Sadowski, C	Completed
252	Allergy Labeling	Marra, C	Completed
253	DMARD	Marra, C	Completed
254	Pharmacy Adaptation Services in B.C.	Marra, C	Completed

APPENDIX A

	Name	PI	Status
255	PHIND-OA	Marra, C	Completed
256	PHIT OA	Marra, C	Completed
257	CAP - Antibiotic Failure	Marrie, T	Completed
258	CAP - Bacteremia	Marrie, T	Completed
259	CAP - COPD	Marrie, T	Completed
260	CAP - Etiology - Extended Diagnostic Testing	Marrie, T	Completed
261	CAP - Etiology - Non-pneumonia Patients	Marrie, T	Completed
262	CAP - Etiology - Urine Normals Substudy	Marrie, T	Completed
263	CAP - Etiology & Cytokine Profile	Marrie, T	Completed
264	CAP - Etiology & TB NMR	Marrie, T	Completed
265	CAP - Etiology of Staph Aureus	Marrie, T	Completed
266	CAP - ICU	Marrie, T	Completed
267	CAP - Low Risk admissions	Marrie, T	Completed
268	CAP - Pregnancy	Marrie, T	Completed
269	CAP - QFever	Marrie, T	Completed
270	CAP – Serial Metabolomics	Marrie, T	Completed
271	CAP - Urine Normals	Marrie, T	Completed
272	CAP - Wetaskiwin	Marrie, T	Completed
273	CAP Study (Main)	Marrie, T	Completed
274	CAPS - Patterns of Antibiotic Use	Marrie, T	Completed
275	CAP-Telehealth	Marrie, T	Completed
276	Edmonton Flu Study	Marrie, T	Completed
277	Med Student Clinical Skills	Marrie, T	Completed
278	UACAPS	Marrie, T	Completed
279	Early Inflammatory Arthritis	Martin, L	Completed
280	Lupus HealthNet	Martin, L	Completed
281	HAART Study	Mason, A	Completed
282	Peds/Fever/Surgery	Masterson, T	Completed
283	ASTHMA - Bridging the Gap	Mayers, I	Completed
284	ASTHMA - Phase 2	Mayers, I	Completed
285	ASTHMA - Phase 3	Mayers, I	Completed
286	ASTHMA - Physician Survey	Mayers, I	Completed
287	ASTHMA Phase 1	Mayers, I	Completed
288	ASTHMA School Questionnaire	Mayers, I	Completed
289	COPD Education Initiative	Mayers, I	Completed
290	MedImmune	Mayers, I	Completed
291	NIMV	Mayers, I	Completed

APPENDIX A

	Name	PI	Status
292	VAC (Virtual Asthma Clinic)	Mayers, I	Completed
293	ASTHMA - All Phases	Mayers, I/Man, P	Completed
294	DAAFI -2	McAlister, F	Completed
295	ESP-CAD	McAlister, F	Completed
296	Heart Failure Database	McAlister, F	Completed
297	PREVENTION	McAlister, F	Completed
298	PROACTIVE	McAlister, F	Completed
299	EPIC - Enhancing Practice to Improve Care	Merck Frosst	Completed
300	DCA in PHT Grant	Michelakis, E	Completed
301	Data Transfer	Miciak, G	Completed
302	Thrombosis	Mitchell, L	Completed
303	Quality of Life in Kidney Disease	Molzahn, A	Completed
304	Acute Kidney Injury in Children	Morgan, C	Completed
305	Long Term Renal Outcomes	Morgan, C	Completed
306	Renal Oxygenation as Predictors of AKI	Morgan, C	Completed
307	Nose Bleed Study	Morrissey, A	Completed
308	RFFF vs ALTF	Morrissey, A	Completed
309	GN Registry	Murray, A	Completed
310	NARG Dialysis Study	Nanda, A	Completed
311	Myocarditis	Nee, A/Paterson, I	Completed
312	Relationship between OT and Trust	Norris, C	Completed
313	Treatment for depression /CAD	Norris, C	Completed
314	OPSCC	O'Connell, D	Completed
315	Oropharyngeal Cancer Survival	O'Connell, D	Completed
316	Fingerprinting in patients with CAD	Oudit, G	Completed
317	HELP	Oudit, G	Completed
318	Novel Study	Oudit, G	Completed
319	Bairhugger Study	PACU-RAH	Completed
320	APPLES Study	Padwal, R	Completed
321	Sample size estimation Equivalence design	Padwal, R	Completed
322	WELCOME	Padwal, R	Completed
323	Contrast-Induced Nephropathy Study	Pannu, N	Completed
324	EP Ablation	Pantano, A	Completed
325	An Integrative Intervention to Improve Critically Ill Patients' Pain, Physiological and Psychological Outcomes	Papathansoglou, E	Completed
326	Breast Cancer	Patel, S	Completed

APPENDIX A

	Name	PI	Status
327	LV Function Recovery in Myocarditis	Paterson, I	Completed
328	Manticore Study	Paterson, I	Completed
329	Proximal RCA	Paterson, I	Completed
330	Kidney Disease and Q of L	Pauly, R	Completed
331	NHD Interviews	Pauly, R	Completed
332	Cardiovascular Risk	Pearson, G	Completed
333	Niacin Pilot Study	Pearson, G	Completed
334	ABI Study	Pehowich, M	Completed
335	SBE Prophylaxis	Pharis	Completed
336	Bronchiolitis	Plint, A	Completed
337	HIV/HCV Coinfection neurological diseases	Power, C	Completed
338	HIV-Antiepileptic Drug Study	Power, C	Completed
339	HIV-Disease incidence/prevalence vs. neurologi	Power, C	Completed
340	Neuropsychological Testing Study	Power, C	Completed
341	IMR	Pretorius, V	Completed
342	ICD-10	Quan, H	Completed
343	TB Rsch	Rennert-May, E	Completed
344	Brain Cancer	Roa	Completed
345	ECLS	Robinson, J	Completed
346	Endocarditis in Pediatric Patients	Robinson, J	Completed
347	IVCRB in Children - Pediatric	Robinson, J	Completed
348	Neonatal HSV	Robinson, J	Completed
349	Peds Oncology Study	Robinson, J	Completed
350	CV ICU - Readmissions	Romney, J	Completed
351	Initial Access Prescribing by Pharmacists in AB	Rosenthal, M	Completed
352	SUPPORT CDM II	Rosenthal, M	Completed
353	BeIMR	Ross, D/Pretorius, V	Completed
354	ACE	Rowe, B	Completed
355	AIR	Rowe, B	Completed
356	ED-Directed Interventions	Rowe, B	Completed
357	Educate Asthma	Rowe, B	Completed
358	Emergency Depart. Projects	Rowe, B	Completed
359	The Lung Attack Alert Study	Rowe, B	Completed
360	Anesthesia techniques for cardiac cath	Rudolf, F	Completed
361	WHIPLASH	Russell, A	Completed
362	Whiplash Survey	Russell, A	Completed
363	GDM	Ryan, E	Completed

APPENDIX A

	Name	PI	Status
364	Hypoglycemic Agent	Ryan, E	Completed
365	Inhaled Milrinone and the R. Ventricle - Dept. of	Ryan, E	Completed
366	Fecal Incontinence in men	Sadowski, D	Completed
367	SCOPE Pilot Project	Sadowski, D	Completed
368	EP Ablation Substudy - ICD	Sandhu, R	Completed
369	Graduating Students Survey	Schindel, T	Completed
370	DOXCABG	Schulze, C	Completed
371	Benefit from Anticoagulation	Shanks, M	Completed
372	Dell Obesity Trial	Sharma, A/Tsuyuki, R	Completed
373	ASTHMA Professional Practice Survey	Sharpe, H	Completed
374	ASTHMA WAP	Sheldon S.	Completed
375	Preclampsia	Sia, W	Completed
376	Urine P/C Ratio Study	Sia, W	Completed
377	GBS	Siddiqi, Z	Completed
378	MMF withdrawal Study	Siddiqi, Z	Completed
379	Vascular Intervention Program	Simpson, S/Johnson, J	Completed
380	Emergency Department Falls Prevention Initiative	Sinclair, D	Completed
381	CV ICU - Glycemic Control	Singh, G	Completed
382	Compression AF	Sivakumaran, S	Completed
383	Device Database	Sivakumaran, S	Completed
384	Factor X	Sivakumaran, S	Completed
385	START Study	Slaughter, S	Completed
386	Sample Size	Smigorowsky, M	Completed
387	Risedronate + CA and Vit. D	Soo, I	Completed
388	Smoking	Spencer, T	Completed
389	Esophageal Cancer Study	Stanger, J	Completed
390	Sample size J. Stewart	Stewart, J	Completed
391	Fort Chip Project	Svenson, L	Completed
392	Refractory ascites	Tandon, P	Completed
393	Tooth Root Resorption	Tarek, E	Completed
394	TOSCA	Teo, K	Completed
395	Endocarditis	Thangaroopan, M	Completed
396	Digoxin Levels	Thompson, A	Completed
397	IBD Clinics Chart Review	Thomson, A	Completed
398	Need and Method Training	Thomson, A	Completed
399	GRIST	Torrible, S	Completed
400	exSALT	Tredget, T	Completed

APPENDIX A

	Name	PI	Status
401	Thermal Injury Study	Tredget, T	Completed
402	CAREERS Study	Triska, O	Completed
403	Cadaver Study - Dept. of Anesthesiology	Tsui, B	Completed
404	Difficult Airway (Anesthesiology)	Tsui, B	Completed
405	Edm ARA Acute Pain Service	Tsui, B	Completed
406	Electrical Impedance	Tsui, B	Completed
407	Asbestosis and Silicosis	Tsuyuki, R	Completed
408	ACHIEVA	Tsuyuki, R	Completed
409	BREATHE	Tsuyuki, R	Completed
410	Characterizing Pharmacy's Professional Culture - D	Tsuyuki, R	Completed
411	COLLABORATE Survey	Tsuyuki, R	Completed
412	Compensation for Pharmacists	Tsuyuki, R	Completed
413	CONCORDANCE	Tsuyuki, R	Completed
414	COPE Study	Tsuyuki, R	Completed
415	Determining Glycemic Control- Pilot	Tsuyuki, R	Completed
416	Effect of mixed messages on pharmacy practice change	Tsuyuki, R	Completed
417	EPI SOB	Tsuyuki, R	Completed
418	epiPAD	Tsuyuki, R	Completed
419	EpiSOB - Saskatchewan	Tsuyuki, R	Completed
420	Exacerbation of Heart Failure	Tsuyuki, R	Completed
421	Heart Health Project	Tsuyuki, R	Completed
422	HEARTT	Tsuyuki, R	Completed
423	HF Medication Burden	Tsuyuki, R	Completed
424	Hypertension Care in PCN	Tsuyuki, R	Completed
425	Improving the Pharmaceutical Care of Canadians - D	Tsuyuki, R	Completed
426	Knowledge Translation Canada	Tsuyuki, R	Completed
427	Management of CHF in Long-Term Care	Tsuyuki, R	Completed
428	Misaligned Culture and Mindset	Tsuyuki, R	Completed
429	MORE SCRIP	Tsuyuki, R	Completed
430	PaKSAC	Tsuyuki, R	Completed
431	Parmalat	Tsuyuki, R	Completed
432	Pharmacy Culture	Tsuyuki, R	Completed
433	Pharmacy Survey	Tsuyuki, R	Completed
434	PSAP7	Tsuyuki, R	Completed
435	REACT	Tsuyuki, R	Completed
436	REACT - Ex	Tsuyuki, R	Completed

APPENDIX A

	Name	PI	Status
437	Relationship between personality traits and pharma	Tsuyuki, R	Completed
438	R _x ACT	Tsuyuki, R	Completed
439	R _x ACTION	Tsuyuki, R	Completed
440	R _x EACH	Tsuyuki, R	Completed
441	R _x ING	Tsuyuki, R	Completed
442	SCRIP - HTN	Tsuyuki, R	Completed
443	SCRIP Plus	Tsuyuki, R	Completed
444	SCRIP Plus Extension	Tsuyuki, R	Completed
445	Statin Survey	Tsuyuki, R	Completed
446	Telehealth	Tsuyuki, R	Completed
447	COLLABORATE	Tsuyuki, R/AHS Pharmacy	Completed
448	SDM Optimum Study	Tsuyuki, R/Tonelli, M	Completed
449	Red Yeast	Tyrrell, B	Completed
450	SPAT 2005	Tyrrell, G	Completed
451	SPAT	Tyrrell, G/Marrie, T	Completed
452	SPAT 4	Tyrrell, G/Marrie, T	Completed
453	Vaccine paper - Temp	Tyrrell, L	Completed
454	Conduction Block in Atrial Fibrillation	Valtuille, L	Completed
455	EP ABLATION - Pilot study	Valtuille, L	Completed
456	Colonoscopy	Van Zantem, S	Completed
457	ReadToMe	Van Zantem, S	Completed
458	Support for Clinical Practice Change	Van, D	Completed
459	Bronchoscopy	Vethanayagam, D	Completed
460	Epistaxis	Vethanayagam, D	Completed
461	Fragrance Study	Vethanayagam, D	Completed
462	HHT	Vethanayagam, D	Completed
463	CARE - CAM	Vohra, S	Completed
464	CARE - CHEO	Vohra, S	Completed
465	CARE - HC-AWR	Vohra, S	Completed
466	CARE - Maternal hypothyroidism	Vohra, S	Completed
467	Cold FX	Vohra, S	Completed
468	DELPHI	Vohra, S	Completed
469	Melatonin RCT	Vohra, S	Completed
470	MY NAP	Vohra, S	Completed
471	NHP and Potential Adverse Events Survey	Vohra, S	Completed
472	Pediatric Integrative Medicine	Vohra, S	Completed
473	Rhodiola Rosea	Vohra, S	Completed

APPENDIX A

	Name	PI	Status
474	SONAR	Vohra, S	Completed
475	ASRLS/SafetyNET	Vohra, S and Pohlman, K	Completed
476	Urinary Tract Infections	Wagg, A	Completed
477	Mini-Metr _x ics	Wang, S	Completed
478	Mini-METR _x ICS - Validation	Wang, S	Completed
479	AIM 3	Webber	Completed
480	Thyroid Orbithopathy	Weis, E	Completed
481	RURAL AMI	Welsh, J	Completed
482	Cardiac Access	Welsh, R	Completed
483	Cardiopulmonary Exercise Testing	Welsh, R	Completed
484	MetaAnalysis	Welsh, R	Completed
485	PCI Registry	Welsh, R	Completed
486	PHAST Care Survey	Welsh, R	Completed
487	PRECEPT	Welsh, R	Completed
488	PROACT Biomarkers Study	Welsh, R	Completed
489	PURGE	Welsh, R	Completed
490	Radial Artery Occlusion	Welsh, R	Completed
491	REASSESS	Welsh, R	Completed
492	REMCON - STEMI	Welsh, R	Completed
493	Rural STEMI Database	Welsh, R	Completed
494	STREAM	Welsh, R	Completed
495	STREAM	Welsh, R	Completed
496	VHR - MVD	Welsh, R	Completed
497	VHR - RADAR	Welsh, R	Completed
498	VHR-ESSC	Welsh, R	Completed
499	Vital Heart Response	Welsh, R	Completed
500	Z-PROACT	Welsh, R	Completed
501	PPS Diabetes	Whiting, J	Completed
502	Imuran Study	Wong, J	Completed
503	Frontal Sinus	Wright	Completed
504	Botox	Yuksel, N	Completed
505	Chronic Pelvic Pain	Yuksel, N	Completed
506	Osteopharm	Yuksel, N	Completed
507	Testosterone therapy	Yuksel, N	Completed
508	Tissue Flap/ASA Heparin Study	Zhu, J	Completed
509	CVICU—Secondary Pulmonary Hypertension	Zibdawi, M	Completed
510	Antiretrovirals in Pregnancy	Zuk, D	Completed

APPENDIX A

	Name	PI	Status
511	R _x EACH CKD	Al Hamarneh, Y / Tsuyuki, R	Ongoing
512	CVICU Frailty Study	Bagshaw, S	Ongoing
513	SPARK	Bagshaw, S	Ongoing
514	GLADIATOR	Bagshaw, S/Singh, G	Ongoing
515	GLS from Biplane Contrast Echo	Becher, H	Ongoing
516	IMAGE -CAD Study	Becher, H	Ongoing
517	APRoN	Bell, R	Ongoing
518	Peas and Beans	Bell, R	Ongoing
519	CPR Simulations	Belmurugiah, N	Ongoing
520	Using community engagement to define health research priorities in maternal-child and family	Benzies, K	Ongoing
521	Genomin analysis in patients with neurological disorders	Bolduc F	Ongoing
522	Triage Inter-rater Reliability Study	Bullard, M	Ongoing
523	AMS Database	Bungard, T	Ongoing
524	VTE Analyses	Bungard, T	Ongoing
525	Warfarin Loading Dose	Bungard, T	Ongoing
526	C-PASS	Butcher, K	Ongoing
527	ICH ADAPT II	Butcher, K	Ongoing
528	5A's Team	Campbell-Scherer, D	Ongoing
529	5AsT Patient Level	Campbell-Scherer, D	Ongoing
530	Implementation and validation of the "5As framework of obesity management" in primary care	Campbell-Scherer, D	Ongoing
531	CMV Infection & Disease in High-Risk Tx Recipients	Cervera, C	Ongoing
532	Brain Cooling	Chan, Michael	Ongoing
533	Ultrasound test for Pressure Ulcer	Chan, Ming	Ongoing
534	ABLE - cGVHD Study	Cuvelier, G	Ongoing
535	Prebiotics for Prevention of UC	Dieleman, L	Ongoing
536	Diet in Ulcerative Colitis	Dieleman, L / Madesen, K / Keshteli, A	Ongoing
537	Prebiotics vs Probiotics Patient Knowledge	Dieleman, L / Silva, M	Ongoing
538	Pheochromocytoma Resection	Duttchen, K	Ongoing
539	Northern Alberta Cirrhosis Cohort	Garcia, L / Tandon P	Ongoing
540	Improving CPR Quality in PICU	Gilfoyle, E	Ongoing
541	INFORM	Gramlich, L	Ongoing
542	Diabetes Care Optimization	Gyenes, G / Li, S	Ongoing

APPENDIX A

	Name	PI	Status
543	Rhwum4U Expansion	Hirota, C	Ongoing
544	HIV Survey	Hughes, C	Ongoing
545	Perceptions of Pharmacist's Role and Professional Development	Hughes, C	Ongoing
546	IBD Clinical Decision Making (CDM) Survey	Huynh, H	Ongoing
547	Proteolytic degradation of cardiac troponin I as a marker of ischemic severity	Hwang, P	Ongoing
548	RheumDash	Katz, S	Ongoing
549	Pregnancy in RA	Keeling, S	Ongoing
550	RA Risk Reduction	Keeling, S	Ongoing
551	ON TRAAC	Keeling, S/Katz, S	Ongoing
552	esACS Substudy	Khan, N	Ongoing
553	SWI - Vancomycin Sternal Wound	Khani-Hanjani, A	Ongoing
554	esACS Study	King-Shier, K	Ongoing
555	CHANGE CANCER ALBERTA	Klein, D	Ongoing
556	E-CHANGE	Klein, D	Ongoing
557	Effect of "healthy" dark chocolate on BP, metabolomes	Lewanczuk, R	Ongoing
558	C-STOP	Majumdar, S	Ongoing
559	Medication Risk Assessment Survey	Makowsky, M	Ongoing
560	e-HEALS	Makowsky, M/Cor, K	Ongoing
561	FORCAST	Maksymowych, W	Ongoing
562	RAPPORT	Maksymowych, W	Ongoing
563	RAPPORT - Newfoundland	Maksymowych, W	Ongoing
564	BETTER WISE	Manca, B	Ongoing
565	RAPPORT – Calgary	Martin, L	Ongoing
566	ABLE – Thrombosis	Mitchell, L	Ongoing
567	BMS Biomarkers	Mitchell, L	Ongoing
568	C17 Project	Mitchell, L	Ongoing
569	Inflammatory Arthritis CV Risk (RxIALTA)	Morgan A	Ongoing
570	Rheum4U	Mosher, D/Devoe, D/Emrick, A/Barber C	Ongoing
571	Smart-e-Pants	Mushahwar, V/Chan, Ming/Dukolow, S/Zygun, D	Ongoing
572	RAPPORT - Biologics - IHE	Ohinmaa, A/IHE	Ongoing
573	EVOLUTION	Padwal, R	Ongoing

APPENDIX A

	Name	PI	Status
574	Technomed	Padwal, R	Ongoing
575	Improving Post Discharge Care after AKI	Pannu, N	Ongoing
576	SETS	Parent, E	Ongoing
577	ABLE - Cisplatin and Hearing loss	Rassekh, R	Ongoing
578	ABLE – Clinical Trial – Prevention of Hearing Loss	Rassekh, R	Ongoing
579	Mobili-T (portable swallowing therapy system)	Rieger, J	Ongoing
580	Antibiotics in Cystic Fibrosis	Saad, E/Brown, N	Ongoing
581	Lower Urinary Tract Symptoms Screening	Sadowski, C	Ongoing
582	LUTS Fall Prevalence	Sadowski, C	Ongoing
583	LUTS Management Algorithm	Sadowski, C	Ongoing
584	Evaluating the effectiveness of a patient navigator service to improve healthcare delivery during transition to adult care for youth/young	Samuel, S	Ongoing
585	PIAAF	Sandhu, R / McAlister, F	Ongoing
586	ABLE	Schultz, K	Ongoing
587	Mystery CRT	Sivakumaran, S	Ongoing
588	Nurse Practitioner Management of AF	Smigorowsky, M	Ongoing
589	Nurse Practitioner Management of MS	Smyth, P	Ongoing
590	A Pilot Randomized Control Trial Comparing the BRECONDA with the Healthwise Breast Reconstruction Decision Aid	Temple-Oberle, C	Ongoing
591	EVADE	Tomczak, C	Ongoing
592	R _x EACH Registry	Tsuyuki R/Al Hamarneh Y	Ongoing
593	R _x EACH Risk Calculator	Tsuyuki R/Al Hamarneh Y	Ongoing
594	New Brunswick UTI	Tsuyuki, R / Beahm N	Ongoing
595	R _x ING Registry	Tsuyuki, R / Okada, H	Ongoing
596	CV ICU Readmission	Van Diepen, S	Ongoing
597	COMPACT	Van Diepen, S,	Ongoing
598	Immunoglobulin replacement therapy in patients with COPD and Hypogammaglobinemia; a retrospective study	Vliagoftis, H / Mohydeen, S	Ongoing
599	Radiographic Predictors of Vent Drain Misplacement	Wilson, M / Emery, D	Ongoing
600	VTE validation study	Wu, C	Ongoing
601	Joint Thermography	Yacyshyn, E	Ongoing
602	ABLE - Cisplatin and Kidney Disease	Zappitelli, M	Ongoing

APPENDIX B

Appendix B: Partial List of Investigators Served

1	ABBOTT/Abbvie
2	Abdul, A
3	Ackman, M
4	Alagiakrishnan, K
5	Al Hamarneh, Y
6	Allen, M
7	Anand, V
8	Anderson, C
9	Anzarut, A
10	Armstrong, P
11	Ashton, T
12	Bagshaw, S
13	Bailey, D
14	Barber, C
15	Beard, K
16	Beaupre, L
17	Becher, H
18	Bedard, E
19	Bell, N
20	Bell, R
21	Belmurugiah, N
22	Bolduc, F
23	Boule, N
24	Bowering, C
25	Braam, B
26	Bratu, I
27	Brisbois, T
28	Broderick, G
29	Broule, N
30	Brown, N
31	Bullard, M
32	Bungard, T
33	Burton, J
34	Butcher, K
35	Butler, C
36	Cadili, A

37	Cameron, J
38	Campbell, D
39	Campbell-Scherer, D
40	Carrie, A
41	Casey, L
42	Cervera, C
43	Chan, Michael
44	Chan, Ming
45	Chao, J
46	Chari, R
47	Chowdhury, R
48	Choy, J
49	Chubaty, A
50	Collins-Nakai, R
51	Cooper, E
52	Coulden, R
53	Couplan, N
54	Cuvelier, G
55	Davis, P
56	Devoe, D
57	Dewart, K
58	Dhaliwal, R
59	Dieleman, L
60	Dillane, D
61	Dong, K
62	Drummond, J
63	Dukolow, S
64	Dumper, J
65	Duttchen, K
66	Dyck, J
67	Dytoc, M
68	Dziegielewski, P
69	El Bialek, T
70	Emery, D
71	Emrick, A
72	Escudar, J

APPENDIX B

73	Estabrooks, C
74	Eurich, D
75	Evaschesen, C
76	Everaert, D
77	Ezekowitz, J
78	Fedorak, R
79	Fedorak/Alistair
80	Fodor, G
81	Fox, R
82	Francis, G
83	Frank, C
84	Galvin, D
85	Garcia, L
86	Garneau Lung Lab
87	Garros, D
88	Ghamdi, M
89	Gilfoyle, E
90	Gonzales
91	Gragasin, F
92	Graham, M
93	Gramlich, L
94	Green, T
95	Gross, D
96	Guenther, C/Anzarut, A
97	Guerra, G
98	Gyenes, G
99	Hall, J, Hall, K
100	Hanna, J
101	Haykowsky, M
102	Hiota, C
103	Hossini, F
104	Houle, S
105	Hughes, C
106	Hunt, I
107	Huynh, H
108	Hwang, P
109	Institute of Health Economics
110	Jacka, M
111	Janzen, W

112	Jeerakathil, T
113	Joffe, M
114	Johnson, JA
115	Johnston, B
116	Jones, A
117	Kalra, S
118	Kanji, H
119	Kao, D
120	Katz, S
121	Keeling, S
122	Kendle, D
123	Keshteli, A
124	Khan, N
125	Khani-Hanjani, A
126	Kimber, S
127	King-Shier, K
128	Klein, D
129	Kopolovic, I
130	Koshman, S
131	Kroeker, K
132	Kumar, A
133	Lai, F
134	Lazaarescu, A
135	Lee, M
136	Lee, T/Fedorak, R
137	Lehr, E
138	Lewanczuk, R
139	Li, Suqing
140	Lin, A
141	Logsetty, S
142	Long, R
143	Lu, C
144	Ma, M
145	Mackie, A
146	Madsen, K
147	Maier, E
148	Majumdar, S
149	Makaroff, C
150	Makowsky, M

APPENDIX B

151	Makskmowych, W
152	Man, P/Sin, D
153	Manca, B
154	Manca, D
155	Manns, B
156	Marin, A
157	Marra, C
158	Marrie, T
159	Martin, L
160	Mason, A
161	Masterson, T
162	May, L
163	Mayers, I
164	McAlister, F
165	McGhan, S
166	McLean, D
167	McMurtry, S
168	McNeely, M
169	Michelakis, E
170	Miciak, G
171	Mitchell, L
172	Mohydeen, S
173	Molzahn, A
174	Morgan, A
175	Morgan, C
176	Morrissey, A
177	Mosher, D
178	Murray, A
179	Mushahwar, V
180	Nanda, A
181	Nee, A/Paterson, I
182	Newman, S
183	Norris, C
184	O'Connell, D
185	Ohinmaa, A
186	Okada, H
187	Oudit, G
188	PACU-RAH
189	Padwal, R

190	Pannu, N
191	Pantano, A
192	Papathansoglou, E
193	Parent, E
194	Pate
195	Patel
196	Paterson, I
197	Pauly, R
198	Pearson, G
199	Pehowich, M
200	Pharis
201	Plint, P
202	Power, C
203	Pretorius, V
204	Quan, H
205	Rajesky, A
206	Rashiq, S
207	Rassekh, R
208	Ravid, N
209	Reid, S
210	Rieger, J
211	Robinson, J
212	Rolfson, D
213	Rolfson, D
214	Romney, J
215	Rosenthal, M
216	Ross, D
217	Rowe, B
218	Rudolf, F.
219	Russell, A
220	Ryan, E
221	Saad, E
222	Sadowski, C
223	Sadowski, D
224	Samuel, S
225	Sandhu, R
226	Schindel, T
227	Schultz, K
228	Schulze, C

APPENDIX B

229	Shanks, M
230	Shapiro, A
231	Sharma, A
232	Sharpe, H
233	Sheldon, S
234	Shibata, M
235	Sia, W
236	Siddiqi, Z
237	Siffeldeen, J
238	Silva, M
239	Simpson, S
240	Sinclair, D
241	Singh, G
242	Sivakumar, L
243	Sivakumaran, S
244	Slaughter, S
245	Smigorowsky, M
246	Smyth, P
247	Somily, A
248	Soo, I
249	Spoor, M
250	Spencer, T
251	Steiner, I
252	Svenson, L
253	Tandon, P
254	Taylor, J
255	Temple-Oberle, C
256	Teo, K
257	Thompson, A
258	Thomson, A
259	Tomczak, C
260	Tonelli, M
261	Tomble, S
262	Toth, E
263	Townsend, D
264	Toy, J
265	Tredget, T
266	Triska, O
267	Tsui, B

268	Tsuyuki, R
269	Tymchak, W
270	Tyrrell, B
271	Tyrrell, G
272	Tyrrell, L
273	Urquhart, G
274	Valtuille, L
275	Van Diepen, S
276	Van Haaften, D
277	Van Zanten, S
278	Vethanayagam, D
279	Vliagoftis, H
280	Vohra, S
281	Wagg, A
282	Walters, S
283	Wang, S
284	Warneke, L
285	Webber
286	Weis, E
287	Wells, H
288	Welsh, R
289	Whiting, J
290	Wilson, M
291	Wong, J
292	Wright
293	Yacyshyn, E
294	Yuksel, N
295	Zappitelli, M
296	Zhu, J
297	Zuk, D
298	Zygun, D

APPENDIX C:

Appendix C: Current Projects

	Project	Principal Investigators/Co-investigators/Project Managers
1	R _x EACH CKD	Al Hamarneh, Y / Tsuyuki, R
2	CVICU Frailty Study	Bagshaw, S
3	SPARK	Bagshaw, S
4	GLADIATOR	Bagshaw, S & Singh, G
5	GLS from Biplane Contrast Echo	Becher, H
6	IMAGE -CAD Study	Becher, H/Sarban, V
7	APRoN	Bell, R
8	Peas and Beans	Bell, R
9	CPR Simulations	Belmurugiah, N
10	Using community engagement to define health research priorities in maternal-child and family	Benzies, K
11	Genomin analysis in patients with neurological disorders	Bolduc, F
12	Triage Inter-rater Reliability Study	Bullard, M
13	AMS Database	Bungard, T
14	VTE Analyses	Bungard, T
15	Warfarin Loading Dose	Bungard, T
16	C-PASS	Butcher, K/Sivakumar, L
17	ICH ADAPT II	Butcher, K/Sivakumar, L
18	5A's Team	Campbell-Scherer, D
19	5AsT Patient Level	Campbell-Scherer, D
20	Implementation and validation of the "5As framework of obesity management" in primary care	Campbell-Scherer, D
21	CMV infection and disease in high-risk transplant recipients (CMV donor positive and recipient negative) in the era of universal prophylaxis	Cervera, C
22	Brain Cooling Study	Chan, Michael/Dunn, M
23	Ultrasound test for Pressure Ulcer	Chan, Ming
24	ABLE - cGVHD Study	Cuvelier, G
25	Prebiotics for Prevention of Ulcerative Colitis	Dieleman, L
26	Prebiotics vs Probiotics Patient Knowledge	Dieleman, L / Silva, M
27	Diet in Ulcerative Colitis	Dieleman, L/Madsen, K/Keshteli, A

APPENDIX C:

	Project	Principal Investigators/Co-investigators/Project Managers
28	Preoperative alpha-blockade for pheochromocytoma resection: Canada Vs USA	Duttchen, K
29	Northern Alberta Cirrhosis Cohort	Garcia, L/Tandon, P
30	Impact of Improving CPR Quality on Patient Outcome in PICU	Gilfoyle, E
31	INFORM	Gramlich, L/Dhaliwal, R
32	Diabetes Care Optimization	Gyenes, G/Li, Suqing
33	Rheum4U Expansion	Hirota, C
34	HIV Survey	Hughes, C
35	Perceptions of Pharmacist's Role and Professional Development	Hughes, C
36	IBD Clinical Decision Making (CDM) Survey	Huynh, H
37	Proteolytic degradation of cardiac troponin I as a marker of ischemic severity	Hwang, P
38	RheumDash	Katz, S
39	Pregnancy in RA	Keeling, S
40	RA Risk Reduction	Keeling, S
41	ON TRAAC	Keeling, S and Katz, S
42	esACS Substudy	Khan, N
43	SWI – Vancomycin Sternal Wound	Khani-Hanjani, A
44	esACS Study	King-Shier, K
45	E-CHANGE	Klein, D
46	CHANGE ALBERTA	Klein, D/ Humphries, S
47	Effect of "healthy" dark chocolate on BP, metabolomes	Lewanczuk, R
48	C-STOP	Majumdar, S
49	Medication Risk Assessment Survey	Makowsky, M
50	e-HEALS	Makowsky, M/Cor, K
51	FORCAST	Maksymowych, W
52	RAPPORT	Maksymowych, W
53	RAPPORT - Newfoundland	Maksymowych, W
54	BETTER WISE	Manca, B
55	RAPPORT - Calgary	Martin, L
56	ABLE - Thrombosis	Mitchell, L
57	BMS Biomarkers	Mitchell, L
58	C17 Project	Mitchell, L

APPENDIX C:

	Project	Principal Investigators/Co-investigators/Project Managers
59	Inflammatory Arthritis CV Risk (RxIALTA)	Morgan, A
60	Rheum4U	Mosher, D/Devoe, D/Emrick, A/Barber, C
61	Smart-e-Pants	Mushahwar, V/Chan, Ming/Dukolow, S/Zygun, D
62	RAPPORT - Biologics	Ohinmaa, A/Institute of Health Economics
63	EVOLUTION	Padwal, R
64	Technomed	Padwal, R
65	Improving Post Discharge Care after AKI	Pannu, N
66	SETS – Schroth Exercise - Scoliosis	Parent, E
67	ABLE - Cisplatin and Hearing loss	Rassekh, R
68	ABLE - Clinical Trial - Prevention of Hearing Loss	Rassekh, R.
69	Mobili-T (portable swallowing therapy system)	Rieger, J
70	Antibiotics in Cystic Fibrosis	Saad, E/Brown, N
71	Lower Urinary Tract Symptoms Screening	Sadowski, C
72	LUTS Fall Prevalence	Sadowski, C
73	LUTS Management Algorithm	Sadowski, C
74	Evaluating the effectiveness of a patient navigator service to improve healthcare delivery during transition to adult care for youth/young adults	Samuel, S
75	PIAAF	Sandhu, R / McAlister, F
76	ABLE	Schultz, K
77	Mystery CRT	Sivakumaran, S
78	Nurse Practitioner Management of AF	Smigorowsky, M
79	Nurse Practitioner Management of MS	Smyth, P
80	A Pilot Randomized Control Trial Comparing the BRECONDA with the Healthwise Breast Reconstruction Decision Aid	Temple-Oberle, C
81	EVADE	Tomczak, C
82	RxEACH Registry	Tsuyuki R / Al Hamarneh Y
83	RxEACH Risk Calculator	Tsuyuki R / Al Hamarneh Y
84	New Brunswick UTI	Tsuyuki R / Beahm N
85	RxING Registry	Tsuyuki, R / Okada, H
86	COMPACT	Van Diepen, S
87	CV ICU Readmission	Van Diepen, S
88	Immunoglobulin replacement therapy in patients with COPD and Hypogammaglobinemia; a retrospective study	Vliagoftis, H / Mohydeen, S

APPENDIX C:

	Project	Principal Investigators/Co-investigators/Project Managers
89	Radiographic Predictors of Vent Drain Misplacement	Wilson, M / Emery
90	VTE Validation Study	Wu, C
91	Joint Thermography	Yacyshyn, E
92	Cisplatin and Kidney Disease	Zappitelli, M

Appendix D: EPICORE Centre Publications - 2016

1. Al Hamarneh YN, Hemmelgarn B, Curtis C, Balint C, Jones CA, Tsuyuki RT. Community pharmacist Targeted Screening for Chronic Kidney Disease. *Can Pharm J* 2016;149(1):13-17.
2. Jonkman NH, Westland H, Groenwold RHH, Ågren S, Atienza F, Blue L, Bruggink-André de la Porte PWF, DeWalt DA, Hebert PL, Heisler M, Jaarsma T, Kempen GIJM, Leventhal ME, Lok DJA, Mårtensson J, Muñoz J, Otsu H, Peters-Klimm F, Rich MW, Riegel B, Strömberg A, Tsuyuki RT, van Veldhuisen DJ, Trappenburg JCA, Schuurmans MJ, Hoes AW. Do Self-Management Interventions Work in Patients With Heart Failure? An Individual Patient Data Meta-Analysis. *Circulation* 2016;133:1189-1198. DOI: 10.1161/CIRCULATIONAHA.115.018006.
3. Rosenthal M, Tsao NW, Tsuyuki RT, Marra CA. Identifying relationships between the professional culture of pharmacy, pharmacists' personality traits, and the provision of advanced pharmacy services. *Res Soc Admin Pharm* 2016;12:56-67.
4. Pohlman KA, Carroll L, Hartling L, Tsuyuki RT, Vohra S. Barriers to implementing a reporting and learning patient safety system: Pediatric chiropractic perspective. *Journal of Evidence-Based Complementary and Alternative Medicine* 2016;21(2):105-109.
5. Tsuyuki RT, Al Hamarneh YN, Jones CA, Hemmelgarn BR. Effectiveness of Community Pharmacist Prescribing and Care on Cardiovascular Risk Reduction: Randomized Controlled Rx EACH Trial. *J Am Coll Cardiol* 2016;67:2846-54. Doi:10.1016/j.jacc.2016.03.528.
6. Brown S, Al Hamarneh YN, Tsuyuki RT, Nehm e K, Sauriol L. Economic Analysis of Insulin Initiation by Pharmacists in a Canadian Setting: The RxING Study. *Can Pharm J* 2016;149(3):130-137. DOI:10.1177/1715163516640813.
7. Houle SKD, Charrois TL, Faruquee CF, Tsuyuki RT, Rosenthal MM. A randomized controlled study of practice facilitation to improve the provision of medication management services in Alberta community pharmacies. *Res Soc Admin Pharm* 2016; Onlined ahead of print DOI 10.1016/j.sapharm.2016.02.013.
8. Hong Y, Sebastianski M, Makowsky M, Tsuyuki R, McMurtry MS. Administrative data are not sensitive for the detection of peripheral arterial disease. *Vasc Med* 2016; 21(4): 331-336. Published online April 25, 2016 doi:10.1177/1358863X16631041.
9. Tsuyuki RT, Rosenthal M, Pearson GJ. Improving Dyslipidemia Management in the Community: RxACT, A randomized trial of pharmacist prescribing. *Can Pharm J* 2016; 149(5):283-292.
10. Jonkman NH, Westland H, Groenwold RHH, Ågren S, Anguita M, Blue L, Bruggink-André de la Porte, Dewalt DA, Hebert PL, Leventhal ME, Lok DKA, Mårtensson J, Muñoz J, Otsu H, Peters-Klimm F, Rich MW, Riegel B, Strömberg A, Tsuyuki RT, Trappenburg JCA, Schuurmans M, Hoes AW. What are Effective Program Characteristics of Self-Management Interventions in Patients With Heart Failure? An Individual Patient Data Meta-analysis. *J Card Fail* 2016;22(11):861-871.
11. Houle SKD, Charrois TL, McAlister FA, Kolber MR, Rosenthal MM, Lewanczuk R, Campbell NRC, Tsuyuki RT. Pay-for-performance remuneration for pharmacist prescribers' management of hypertension: A substudy of the RxACTION trial. *Can Pharm J* 2016;149(6):345-351.
12. Al Hamarneh YN, Houle SKD, Padwal R, Tsuyuki RT. Hypertension Canada's 2016 Canadian Hypertension Education Program guidelines for pharmacists: An update. *Can Pharm J* 2016;149(6):337-344.
13. Tsuyuki RT, Al Hamarneh YN. Chapter 3: Community Pharmacy in Canada. In: Community Pharmacy – An International Comparison. Editors: H Okada and K Kotani. Nova Science Publishers, Inc. 2016. ISBN: 978-1-53610-199-7 (eBook).
14. Tsuyuki RT, Eisenschmid P. CPJ and CPhA: Taking evidence for pharmacist care to the next level. *Can Pharm J* 2016;149(1):6-7.

APPENDIX D

15. Tsuyuki RT. The primary care pharmacist. (Editorial). *Can Pharm J* 2016;149(2):61-63.
16. Tsuyuki RT, Chatterley P. Pharmacy practice publications with impact. (Editorial). *Can Pharm J* 2016;149(3):113-115.
17. Tsuyuki RT. Pharmacists' responses to natural disasters: Insights into the soul of pharmacists and our role in society. (Editorial). *Can Pharm J* 2016;149(4): 188-189.
18. Dolovich L, Tsuyuyuki RT. Pharmacy practice research produces findings that inform how pharmacists contribute to optimal drug therapy outcomes for Canadians. (Editorial). *Can Pharm J* 2016;149(5):261-263.
19. Rosenthal MM, Austin Z, Tsuyuki RT. Barriers to pharmacy practice change: Is it our nature or nurture? (Editorial). *Can Pharm J* 2016;149(6):317-319.
20. Beahm NP, Tsuyuki RT. Taking practice innovation to the next level. (Commentary). *Can Pharm J* 2016;150 (1):9.
21. Mukattash TL, Alzoubi KH, Abu El-Rub E, Jarab AS, Al-Azzam SI, Khmour M, Shara M, Al Hamarneh YN, "Prevalence of non-adherence among psychiatric patients in Jordan, a cross sectional study", *International Journal of Pharmacy Practice*, 2016, 24:217-221.
22. Rosenthal MM, Austin Z, Farrell J, Tsuyuki RT. Overcoming our nature and nurture. (Editorial). *Can Pharm J* 2017;150 (1):5-7.
23. Beahm NP, Tsuyuki RT. Innovative pharmacy practice: Melanie Danilak. (Practice Profile). *Can Pharm J* 2017;150(1):14-16.
24. Li S, Roschkov S, Alkhodair A, O'Neill BJ, Chik CL, Tsuyuki RT, Gyenes GT. The Effect of Nurse Practitioner-Led Intervention on Diabetes Care for Patients Admitted to Cardiology Services. *Can J Diabetes* 2017;41:10-16.
25. Donald M, King-Shier K, Tsuyuki RT, Al Hamarneh YN, Jones CA, Manns B, Tonelli M, Tink W, Scott-Douglass N, Hemmelgarn B. Patient, family physician and community pharmacist perspectives on expanded pharmacy scope of practice: a qualitative study. *CMAJ Open* 2017. DOI:10.9778/cmajo.20160135.
26. McMahon KR, Rassekh SR, Schultz KR, Pinsk M, Blydt-Hansen T, Mammen C, Tsuyuki RT, Devarajan P, Cuvelier GDE, Mitchell LG, Baruchel S, Palijan A, Carleton BC, Ross CJD, Zappitelli M; Applying Biomarkers to Minimize Long-Term Effects of Childhood/Adolescent Cancer Treatment (ABLE) Research Group. Design and Methods of the Pan-Canadian Applying Biomarkers to Minimize Long-Term Effects of Childhood/Adolescent Cancer Treatment (ABLE) Nephrotoxicity Study: A Prospective Observational Cohort Study. *Canadian Journal of Kidney Health and Disease* 2017;4:1-13.
27. Marra C, Johnston K, Santschi V, Tsuyuki RT. Cost-effectiveness of pharmacist care for managing hypertension in Canada. *Can Pharm J* 2017. DOI:10.1177/1715163517701109.
28. Houle SKD, Charrois TL, Faruquee CF, Tsuyuki RT, Rosenthal MM. A randomized controlled study of practice facilitation to improve the provision of medication management services in Alberta community pharmacies. *Res Soc Admin Pharm* 2017; 13:339-348.
29. Korn D, McMurtry MS, George-Phillips K, Bungard TJ. Critical INRs after hours – To call or not to call? *Can Fam Physician* 2017; (in press).
30. Mejilla A, Guirguis M, Koshman K, Bungard TJ. Venous thromboembolism prophylaxis on General Medical Units at the UAH – Are we Serving Our Patients Well? *Can J Hosp Pharm* 2017; (in press).
31. Bungard TJ, Semchuk W. The Acute Management of Venous Thromboembolism – A Practical Tool for the Front Line Clinician. *CJP* 2017; (in press).

APPENDIX E

Appendix E: Summary Income Statement

EPICORE Income Statement

For the 12 month periods ending December 31, 2016 and 2015

	2016	2015
Revenues		
Project income	\$ 397,958	\$ 474,802
Accrued revenue not invoiced	95,903	-
Total revenue	<u>493,861</u>	<u>474,802</u>
Expenses		
Salaries, benefits, bursaries and grants	210,393	206,769
Consulting and outside services	5,921	10,750
Supplies	3,194	4,258
Computer and office supplies	6,450	6,068
Telecommunications	3,367	5,689
Facility and equipment related costs	3,505	4,579
Travel	1,224	4,306
Bad debts (recovery)	(25,596)	68,402
Total expenses	<u>208,458</u>	<u>310,821</u>
Net income	<u>\$ 285,403</u>	<u>\$ 163,981</u>